

TEMPLE POINT



TEMPLE POINT



MARINE PARK ROAD, WATAMU, KENYA

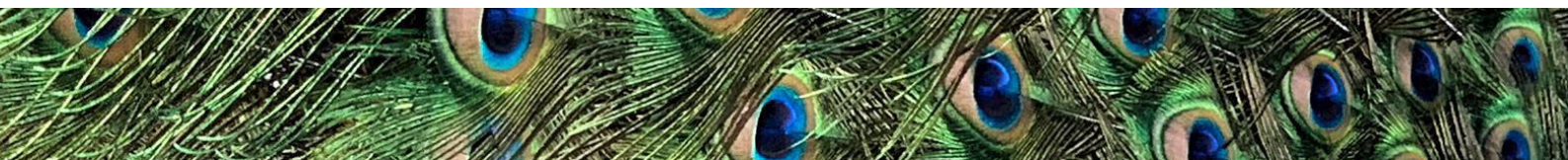


Temple Point Resort

Temple Point is an alternative and innovative concept that inhabits diverse brands such as the LichtHaus: a bar floating above the Mida Creek & its sister-concept: the LichtSpielHaus, a relaxed open air cinema underneath a giant baobab tree. Temple Point is also home to the WasserHaus, a tranquil spa hidden above the water & beneath the mangroves, and the Bazaar, a vibrant pool and marketplace for events, co-working spaces, daily hospitality and relaxing.

Our unique location inside the Watamu Marine Park and the Mida Creek National Reserve enables our guests to dive into a natural spectacle characterised by botanical gardens, African wildlife on land and sea, and breathtaking sunsets dropping into the creek each evening. Our onsite world-class Extra Divers centre brings our guests face to face with turtles, dolphins, whale sharks as well as the very small residents of the healthy coral reefs of Watamu. For travellers that want to escape into a new world, we also offer long term stay with the option of fitness and wellness programs to reach their goals, physically and mentally.

All these experiences are supported by our inventive new cuisine and love for creating the soundtrack to a life well lived. Discover our way of life within wide ranging accommodation options, offering individual characteristics, price points and flare. Come find us and join our pursuit for wiser travel, the care for the natural habitats which are supporting us and the appreciation of living a life that leaves a story worth telling.





MAKE ROOM FOR UNIQUE EXPERIENCES



CREEK DELUXE ROOM

LOCATION & VIEWS



Our Deluxe Rooms are located directly in front of the Mida Creek and it's beautiful Mangrove Forest. With views into the creek and our botanical garden you will enjoy captivating sunsets, fish eagles scouting the creek or playful monkeys in our garden. Experience handcrafted Kenyan vanity products, special amenities and our warm hospitality in these spacious, modern African designed rooms who will make sure you'll fully let your worries go. Hakuna Matata

AMENITIES

- AIR CONDITIONING
- CEILING FAN
- MOSQUITO NET
- MINI FRIDGE
- TEA KETTLE
- COFFEE MAKER
- SMART TV
- WIFI
- DESK WITH CHAIR
- SOFA CHAIR
- WARDROBE
- BATHROBE
- OPEN SHOWER
- TOILET
- HAIRDRYER
- SAFE
- BALCONY/PATIO
- DELUXE VANITY SET





CREEK STANDARD ROOM

CREEK STANDARD ROOM



Our Creek Standard Rooms are located directly in front of the Mida Creek and its beautiful Mangrove Forest. With views into the creek and our botanical garden you will enjoy captivating sunsets, watching fish eagles scouting the creek or playful monkeys in our garden.

Experience our warm hospitality in this spacious, traditionally African designed rooms.



AMENITIES

- AIR CONDITIONING
- CEILING FAN
- MOSQUITO NET
- MINI FRIDGE
- TEA KETTLE
- COFFEE MAKER
- SMART TV
- WIFI
- DESK WITH CHAIR
- WARDROBE
- BATHROBE
- OPEN SHOWER
- TOILET
- HAIRDRYER
- SAFE
- BALCONY/PATIO

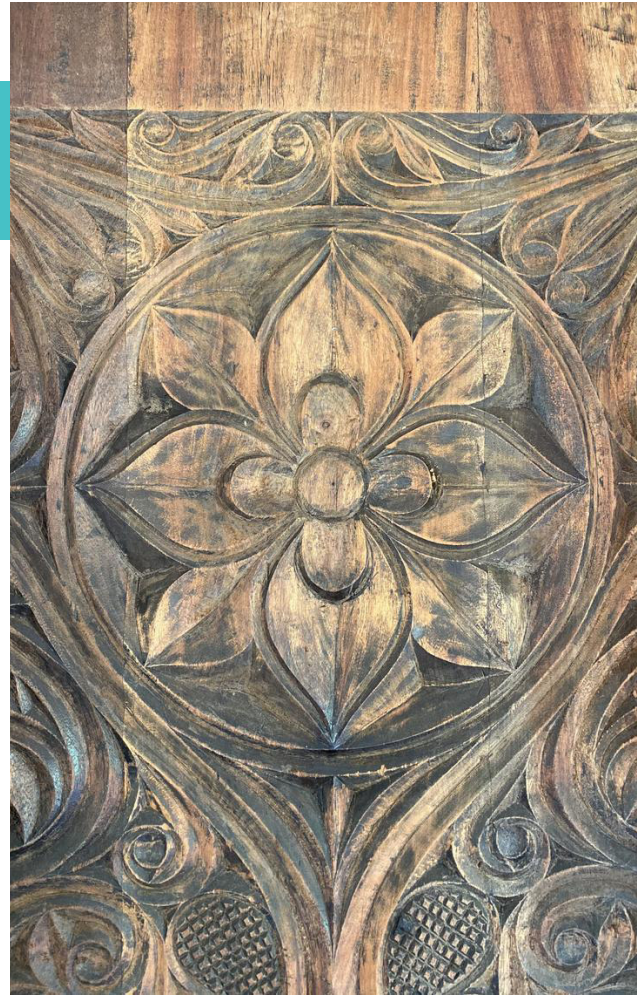




BOUTIQUE GARDEN ROOM



LOCATION & VIEWS



Our Boutique Rooms are located directly in our botanical garden with more than 3000 plants, trees and African wildlife. Our peacock, playful monkeys and other birds will visit you on your private patio.

Experience our warm hospitality in spacious, modern African designed rooms with a fresh bright feeling & colours which will make sure you'll feel right at home.

AMENITIES

- AIR CONDITIONING
- CEILING FAN
- MOSQUITO NET
- MINI FRIDGE
- TEA KETTLE
- COFFEE MAKER
- SMART TV
- WIFI
- DESK WITH CHAIR
- ARM CHAIR
- WARDROBE
- BATHROBE
- OPEN SHOWER
- TOILET
- HAIRDRYER
- SAFE
- BALCONY/PATIO
- DELUXE VANITY SET





POOL, BAR & BRASSERIE



BAZAAR

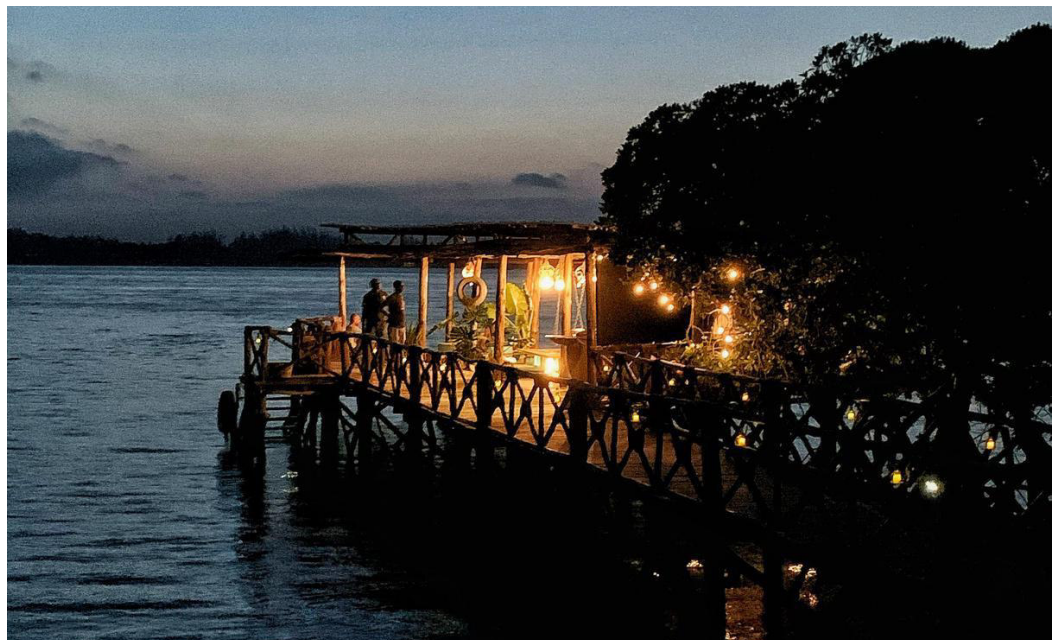
POOL / BAR / BRASSERIE

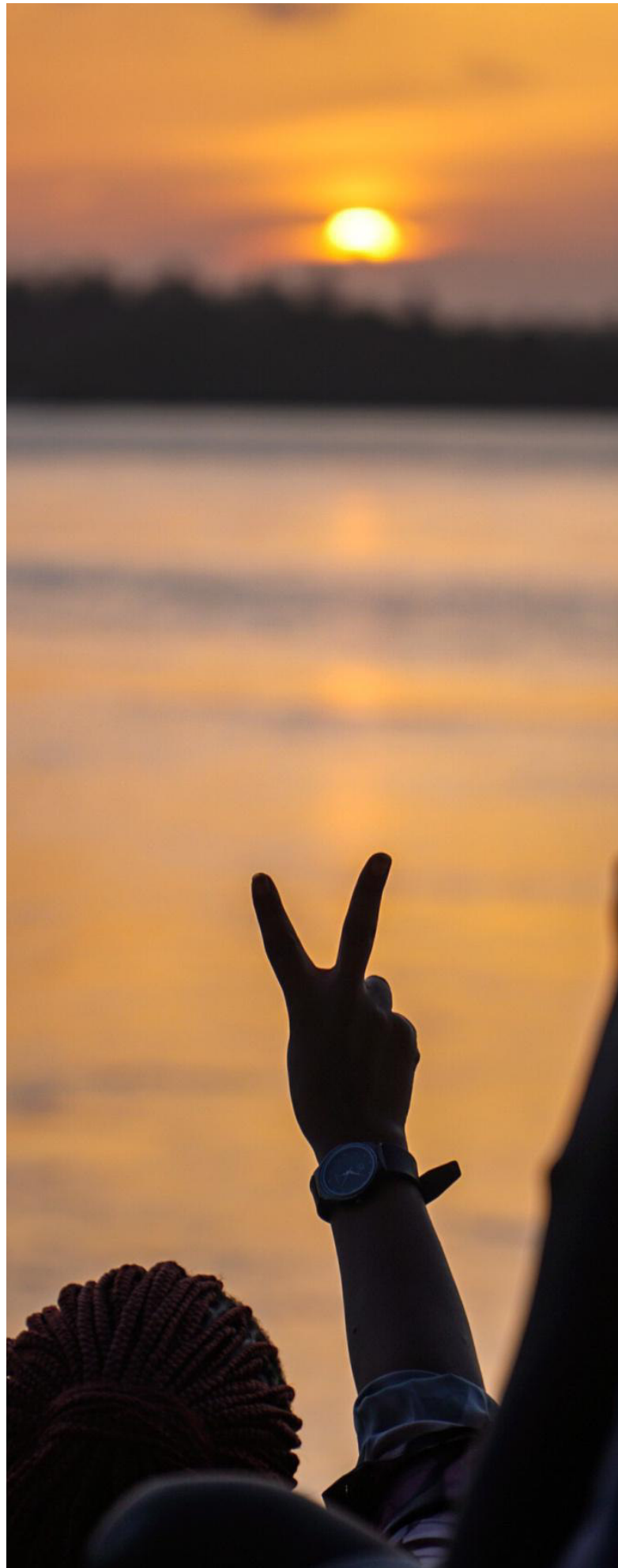


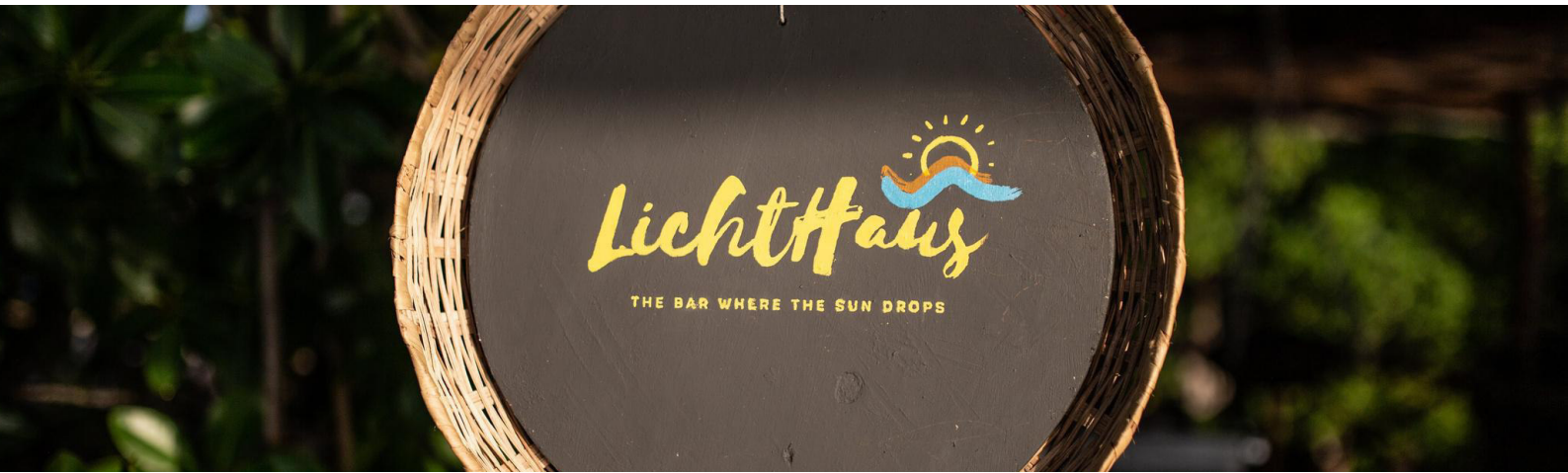
DRINK, EAT, WORK, LIVE

Our colourful Bazaar is the heart of our daily cuisine, our Co-working space, and our pool bar with a beautiful lively vibe. Chef Alex Arunga delivers food that excites you any time of the day no matter if you like seafood, meat or live life as a vegan. In any case you can enjoy drinks such as our signature Holy Tree cocktail, made from the famous baobab tree. Also bring your Laptop and get your work out of the way with our fiber-highspeed internet at the pool or in our air-conditioned co-working space.









THE ONE AND ONLY

Our famous bar above the Mida Creek. Probably the only bar in Kenya where you can lay in a net above the water inside of a national park. Here we only serve premium drinks & craft beers, as well as modern Kenyan inspired food .

All this in an incredible setting and our wonderful music playlist (which is asked after daily), that creates a vibe and atmosphere like no other place in Watamu or Kenya.

The biggest highlight of this incredible place however is the daily gift of the sunset. There is a reason the bar is called:

"THE BAR WHERE THE SUN DROPS"



WasserHaus

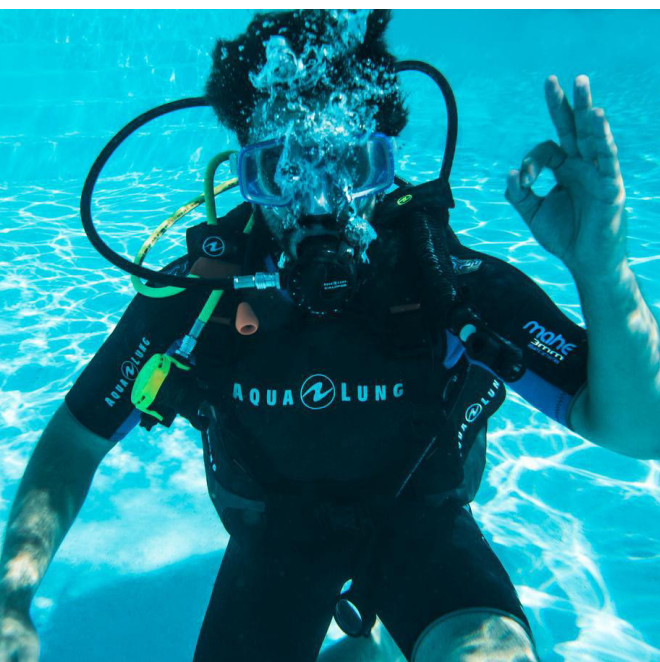
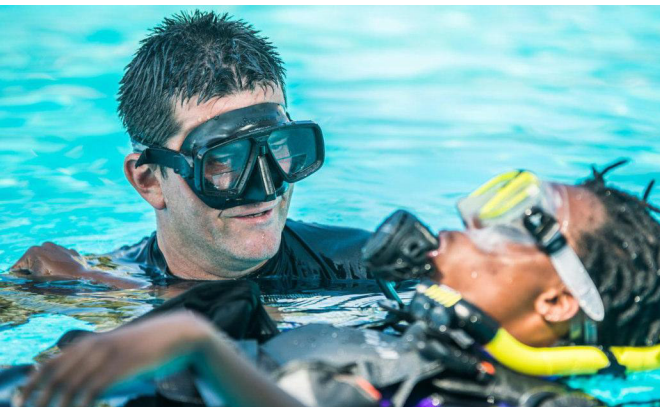
THE SPA AT THE MIDA CREEK



PEACE BELOW THE MANGROVES

A tranquil spa hidden in our mangrove forest was made to create a well being moment to last in your memory as an unforgettable experience. Aromas, expert hands and natural products that take care of your skin and soul at the same time. WasserHaus is a place where your whole body will feel balanced, revitalised and replenished after living life to the fullest. Come to the Haus that has its home on the point of the peninsula where the Indian ocean flows into the middle creek. Let go of any stress and pain underneath the mangroves so it be taken away by the tides of creek.





SCUBA DIVING



THE EXTRA DIVERS EXPERIENCE

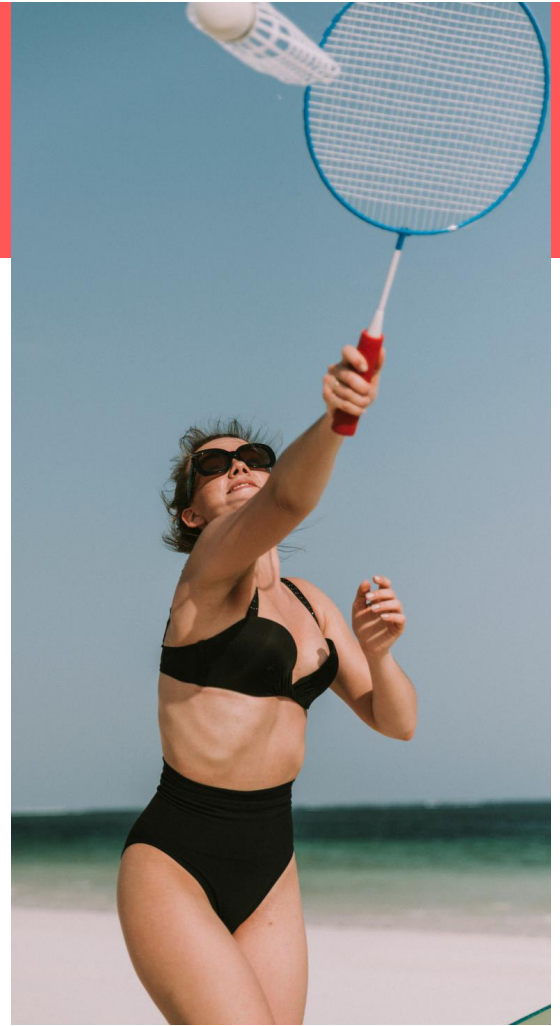
The biggest german dive-centre operator delivering expert service on all levels. Doesn't matter if you have 0 or 2000 dives under your belt. Mathias our german dive-centre manager has dived all over the world and brings a mountain of experience to the job. And we certainly are not held back by cheap equipment. Extra Divers works with well looked after Aqua Lung gear and IDE compressor as well as nitrox-system.

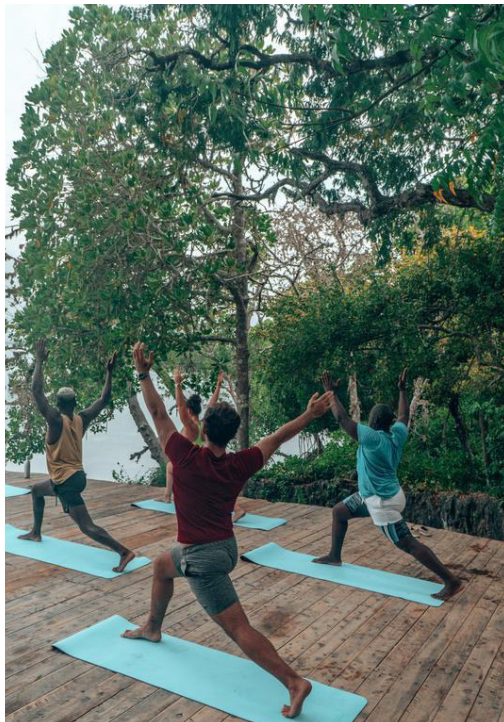
The dive sites are located a 15-45 min. ride away in our fast and well set up dive boats, leaving every diver some space to move. Under water you will come face to face with turtles, dolphins, whale sharks as well as the beautiful marine life of the healthy coral reefs of Watamu. Or with Mathias teaching diving in on of our many different courses for beginners and advanced diver.



TINY & SHORT BEACH

Our ancient temple located at the point of the Watamu peninsula overlooks Tiny & Short Beach. Both are very secluded beautiful white sand beaches on which we set up your romantic little beach oasis on request. And during low tide we take our guest for a walk to long beach. Discovering the incredible marine life along the way



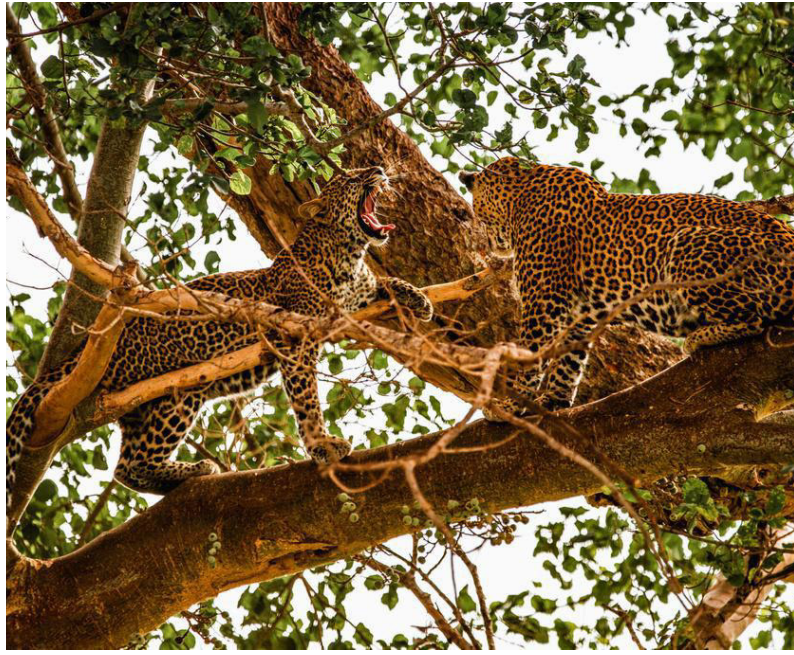


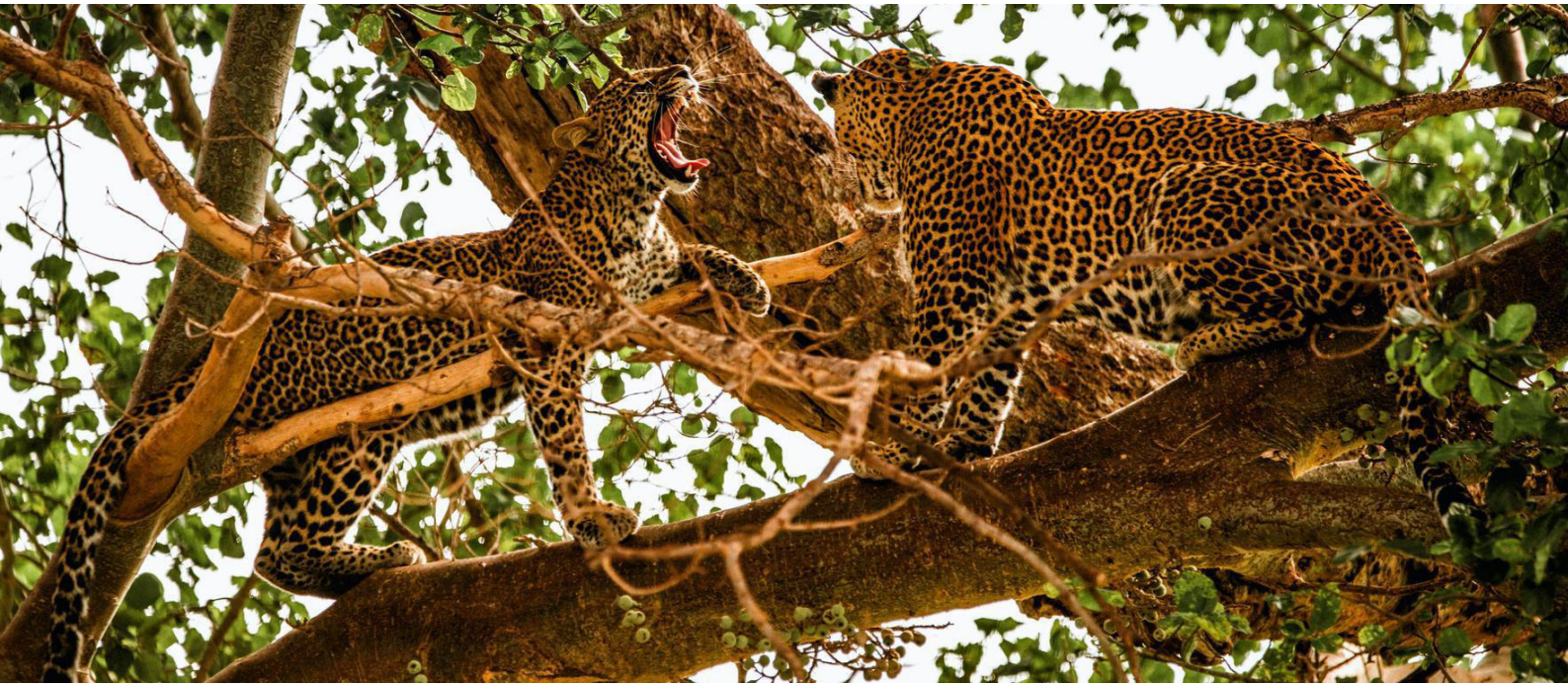
YOGA DECK

OTHER ACTIVITIES



SAFARI





FROM THE MARA TO TSAVO

Kenya is certainly amongst the best safari destinations worldwide. The spectacle of the great migration in the Maasai Mara is a marvel of our world. But also parks such as Lake Nakuru & Naivasha, Amboseli or Tsavo all offer their unique highlight. The latter one, Tsavo east & west, are located only a quick 1.5 hour drive away from Temple Point. Which makes it the only safari park in the world located in such close proximity to a tropical Beach.

We offer our guest various options from a day-safari to a magical over night safari for one ore more nights in selected safari camps in one or more parks of Kenya. Get in touch and our team will tailor make an experience just for you. Including, flights, private safari 4x4, camp selection or even hot-air-ballon rides.

